



Test Report

No.: GZ0712192499/CHEM Date: JAN 03, 2008 Page 1 of 5

NINE DRAGONS PAPER (HOLDINGS) LIMITED
XINSHA PORT INDUSTRY ZONE, MAYONG TOWN, DONGGUAN CITY, GUANGDONG PROVINCE, CHINA

The following sample(s) was/were submitted and identified on behalf of the applicant as CLAY COATED DUPLEX BOARD WITH GREY BACK

Client Reference: 单面涂布灰底白纸板系列: 200、230、250、270、300、320、350、450、500 GSM

SGS Ref No. : GLHGR071208705CM
Manufacturer : DONGGUAN SEA DRAGON PAPER INDUSTRIES CO.,LTD.
Sample Receiving Date : DEC 20, 2007
Further Information Receiving Date : JAN 02, 2008
Testing Period : DEC 20, 2007 TO JAN 03, 2008

Test Requested : In accordance with the RoHS Directive 2002/95/EC, and its amendment directives.

Test Method : With reference to IEC 62321 Ed.1 111/54/CDV
Procedures for the Determination of Levels of Regulated Substances in Electrotechnical Products
(1) Determination of Cadmium by ICP.
(2) Determination of Lead by ICP.
(3) Determination of Mercury by ICP.
(4) Determination of Hexavalent Chromium by Colorimetric Method.
(5) Determination of PBBs and PBDEs by GC-MS.

Test Results : Please refer to next page.

Conclusion : Based on the performed tests on submitted sample(s), the results **comply with** the RoHS Directive 2002/95/EC and its subsequent amendments.

Signed for and on behalf of
SGS-CSTC Ltd.

Jiang YongPing, Terry
Sr. Engineer

Test results by chemical method (Unit: mg/kg)

Test Item(s):	Method (refer to)	No.1	MDL	RoHS Limit
Cadmium(Cd)	(1)	N.D.	2	100
Lead (Pb)	(2)	N.D.	2	1000
Mercury (Hg)	(3)	N.D.	2	1000
Hexavalent Chromium (CrVI) by alkaline extraction	(4)	N.D.	2	1000
Sum of PBBs		N.D.	-	1000
Monobromobiphenyl		N.D.	5	
Dibromobiphenyl		N.D.	5	
Tribromobiphenyl		N.D.	5	
Tetrabromobiphenyl		N.D.	5	
Pentabromobiphenyl		N.D.	5	
Hexabromobiphenyl		N.D.	5	
Heptabromobiphenyl		N.D.	5	
Octabromobiphenyl		N.D.	5	
Nonabromobiphenyl		N.D.	5	
Decabromobiphenyl		N.D.	5	
Sum of PBDEs (Mono to Nona)(Note 4)	(5)	N.D.	-	1000
Monobromodiphenyl ether		N.D.	5	
Dibromodiphenyl ether		N.D.	5	
Tribromodiphenyl ether		N.D.	5	
Tetrabromodiphenyl ether		N.D.	5	
Pentabromodiphenyl ether		N.D.	5	
Hexabromodiphenyl ether		N.D.	5	
Heptabromodiphenyl ether		N.D.	5	
Octabromodiphenyl ether		N.D.	5	
Nonabromodiphenyl ether		N.D.	5	
Decabromodiphenyl ether		N.D.	5	
Sum of PBDEs (Mono to Deca)		N.D.	-	-

Test Part Description:

No.1 Gray paperboard w/ white surface

Note : 1. mg/kg = ppm

2. N.D. = Not Detected (< MDL)

3. MDL = Method Detection Limit

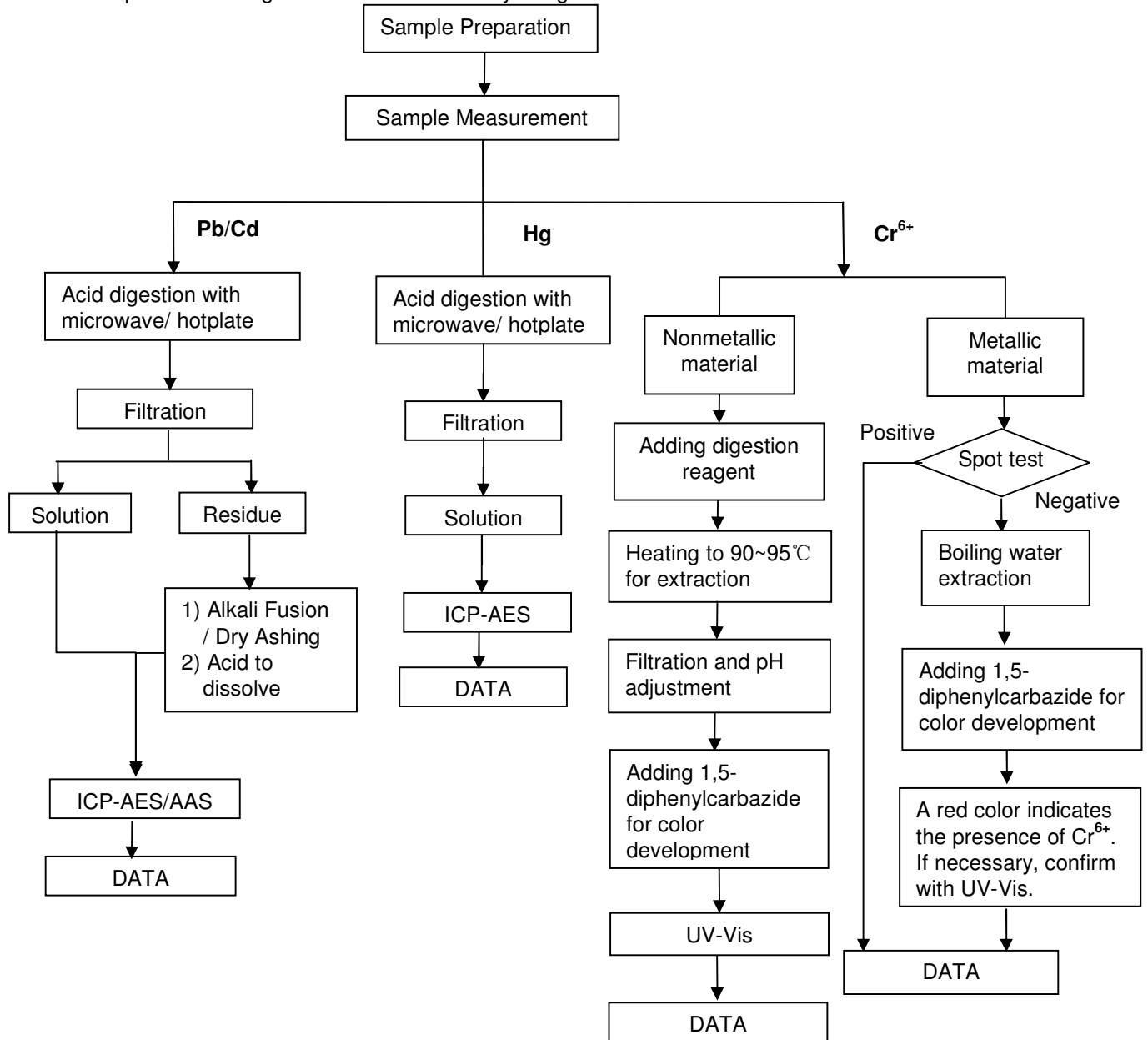
4. Sum of Mono to NonaBDE & according to 2005/717/EC DecaBDE is exempt.

5. "-" = Not regulated

ATTACHMENTS

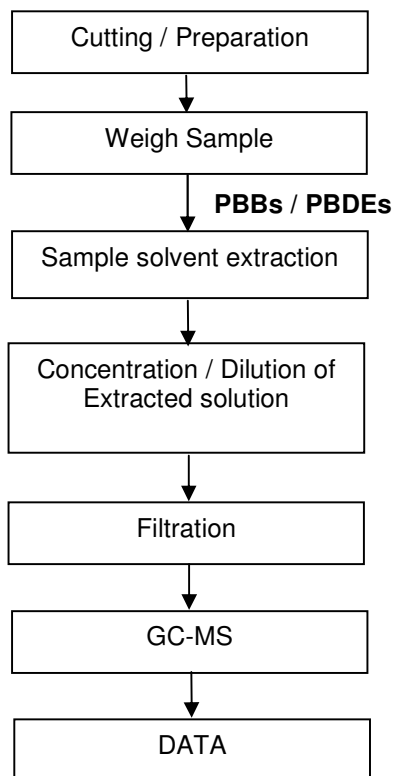
Testing Flow Chart

- 1) Name of the person who made measurement: David Shen
- 2) Name of the person in charge of measurement: Emily Feng



Testing Flow Chart

- 1) Name of the person who made measurement: Fiona Xu
- 2) Name of the person in charge of measurement: Nina Wu



Sample photo :



SGS authenticate the photo on original report only

*** End of Report ***