



**Test Report**

No. CANEC1200425603

Date: 19 Jan 2012

Page 1 of 7

HENKEL (CHINA) INVESTMENT COMPANY LTD.  
NO.928 ZHANGHENG RD,PUDONG,SHANGHAI 201203, CHINA

The following sample(s) was/were submitted and identified by/on behalf of the client as:  
Adhesin FB 313,3363 MIXTURE

SGS Job No. : CP12-001407 - GZ  
Date of Sample Received : 12 Jan 2012  
Testing Period : 12 Jan 2012 - 19 Jan 2012  
Test Requested: : A: As specified by client, the submitted sample(s) for compliance with Public Law 110-314 (Consumer Product Safety Improvement Act of 2008, CPSIA):-  
1) Lead in accessible substrate materials  
2) Phthalates  
  
B~C: Selected test (s) as requested by client.

Test Method: : Please refer to next page(s)

Test Results: : Please refer to next page(s)

Result Summary :

A:

<u>Item</u>	<u>Test Parameter</u>	<u>Conclusion</u>
1	CPSIA section 101(a)(2) - Lead in accessible substrate materials (including Children's Metal Jewelry)	<b>PASS</b>
2	CPSIA section 108 - Phthalates	<b>PASS</b>

Signed for and on behalf of  
SGS-CSTC Ltd.

Alison Zhang  
Approved Signatory

This document is issued by the Company subject to its General Conditions of Service printed overleaf, available on request or accessible at [http://www.sgs.com/terms\\_and\\_conditions.htm](http://www.sgs.com/terms_and_conditions.htm) and, for electronic format documents, subject to Terms and Conditions for Electronic Documents at [www.sgs.com/terms\\_e-document.htm](http://www.sgs.com/terms_e-document.htm). Attention is drawn to the limitation of liability, indemnification and jurisdiction issues defined therein. Any holder of this document is advised that information contained hereon reflects the Company's findings at the time of its intervention only and within the limits of Client's instructions, if any. The Company's sole responsibility is to its Client and this document does not exonerate parties to a transaction from exercising all their rights and obligations under the transaction documents. This document cannot be reproduced except in full, without prior written approval of the Company. Any unauthorized alteration, forgery or falsification of the content or appearance of this document is unlawful and offenders may be prosecuted to the fullest extent of the law. Unless otherwise stated the results shown in this test report refer only to the sample(s) tested.



SGS-CSTC Standards Technical Services Co., Ltd.  
Guangzhou Branch Testing Center Chemical Laboratory

198 Kezhu Road, Sciencetech Park Guangzhou Economic & Technology Development District, Guangzhou, China 510663 t (86-20) 82155555 f (86-20) 82075113 www.cn.sgs.com  
中国·广州·经济技术开发区科学城科珠路198号 邮编: 510663 t (86-20) 82155555 f (86-20) 82075113 e sgs.china@sgs.com

Member of the SGS Group (SGS SA)



# Test Report

No. CANEC1200425603

Date: 19 Jan 2012

Page 2 of 7

Test Results:

### Test Part Description:

Specimen No.	SGS Sample ID	Description
1	CAN12-004256.002	White paste

Remarks:

- (1) 1 mg/kg = 1 ppm = 0.0001%
- (2) MDL = Method Detection
- (3) ND = Not Detected (< MDL)
- (4) "-" = Not Regulated

**A:**  
**CPSIA section 101(a)(2) - Lead in accessible substrate materials (including Children's Metal Jewelry)**

Test Method (non-metallic materials): CPSC Test Method: CPSC-CH-E1002-08.1 'Standard Operation Procedure for Determining Total Lead (Pb) in Non-Metal Children Product'

Test item	Permissible Limit**	Unit	MDL	002
Lead (Pb)	0.01	%	0.002	ND
<b>Comment</b>	---			<b>PASS</b>

\*\* Limit applies to a children's product manufactured after 14 August 2011 (Public Law 112-28 (HR 2715, 112th Congress) amending CPSIA)

The requirements for lead in substrate in children's products is summarized below

Scope	Requirement	Date of manufacture
Lead in accessible substrate	≤ 0.03 %	Before 14 Aug 2011
	≤ 0.01%	After 14 Aug 2011

**CPSIA section 108 - Phthalates**

Method: With reference to CPSC-CH-C1001-09.3. Analysis was performed by GC-MS.

**Concentration of phthalates in components of toy product**

Test item(s)	Permissible Limit per component	Unit	MDL	002
Dibutyl Phthalate(DBP)	0.1	%	0.003	ND
Benzylbutyl Phthalate(BBP)	0.1	%	0.003	ND
Bis-(2-ethylhexyl) Phthalate(DEHP)	0.1	%	0.003	ND
<b>Comment</b>	---			<b>PASS</b>

This document is issued by the Company subject to its General Conditions of Service printed overleaf, available on request or accessible at [http://www.sgs.com/terms\\_and\\_conditions.htm](http://www.sgs.com/terms_and_conditions.htm) and, for electronic format documents, subject to Terms and Conditions for Electronic Documents at [www.sgs.com/terms\\_e-document.htm](http://www.sgs.com/terms_e-document.htm). Attention is drawn to the limitation of liability, indemnification and jurisdiction issues defined therein. Any holder of this document is advised that information contained hereon reflects the Company's findings at the time of its intervention only and within the limits of Client's instructions, if any. The Company's sole responsibility is to its Client and this document does not exonerate parties to a transaction from exercising all their rights and obligations under the transaction documents. This document cannot be reproduced except in full, without prior written approval of the Company. Any unauthorized alteration, forgery or falsification of the content or appearance of this document is unlawful and offenders may be prosecuted to the fullest extent of the law. Unless otherwise stated the results shown in this test report refer only to the sample(s) tested.



Concentration of phthalates in components of toy that can be placed in the mouth or childcare article

<u>Test item(s)</u>	<u>Permissible Limit</u> per component	<u>Unit</u>	<u>MDL</u>	<u>002</u>
Diisononyl Phthalate(DINP)	0.1	%	0.010	ND
Di-n-octyl Phthalate(DNOP)	0.1	%	0.003	ND
Diisodecyl Phthalate(DIDP)	0.1	%	0.010	ND
<b>Comment</b>	---			<b>PASS</b>

**B:**  
**ASTM F 963-08 - Heavy Metal Analysis, Total Lead content (Clause 4.3.5)**

Test Method: With reference to CPSC Test Method: CPSC-CH-E1002-08.1, analysis was performed by ICP-OES.

<u>Test Item(s)</u>	<u>Limit</u>	<u>Unit</u>	<u>MDL</u>	<u>002</u>
Total Lead (Pb)	90	mg/kg	20	ND

**ASTM F 963-08 (Clause 4.3.5) & EN71 Part 3 : 1994 (including amendment A1:2000/ AC:2002) - Migration of Certain Elements.**

Test Method :Sample was extracted by dilute hydrochloric acid in accordance with ASTM F 963-08(Claue 8.3) and EN71 Part 3 :1994 + A1: 2000/AC: 2002, analysis was performed by ICP-OES.

<u>Test Item(s)</u>	<u>Limit</u>	<u>Unit</u>	<u>MDL</u>	<u>002</u>
Soluble Lead (Pb)	90	mg/kg	5	ND
Soluble Antimony (Sb)	60	mg/kg	5	ND
Soluble Arsenic (As)	25	mg/kg	5	ND
Soluble Barium (Ba)	1000	mg/kg	10	ND
Soluble Cadmium (Cd)	75	mg/kg	5	ND
Soluble Chromium (Cr)	60	mg/kg	5	ND
Soluble Mercury (Hg)	60	mg/kg	5	ND
Soluble Selenium (Se)	500	mg/kg	10	ND

Notes :

- (1) Results shown are of the adjusted analytical results.

This document is issued by the Company subject to its General Conditions of Service printed overleaf, available on request or accessible at [http://www.sgs.com/terms\\_and\\_conditions.htm](http://www.sgs.com/terms_and_conditions.htm) and, for electronic format documents, subject to Terms and Conditions for Electronic Documents at [www.sgs.com/terms\\_e-document.htm](http://www.sgs.com/terms_e-document.htm). Attention is drawn to the limitation of liability, indemnification and jurisdiction issues defined therein. Any holder of this document is advised that information contained hereon reflects the Company's findings at the time of its intervention only and within the limits of Client's instructions, if any. The Company's sole responsibility is to its Client and this document does not exonerate parties to a transaction from exercising all their rights and obligations under the transaction documents. This document cannot be reproduced except in full, without prior written approval of the Company. Any unauthorized alteration, forgery or falsification of the content or appearance of this document is unlawful and offenders may be prosecuted to the fullest extent of the law. Unless otherwise stated the results shown in this test report refer only to the sample(s) tested.



**C: Phthalates Content**

Test Method: With reference to EN 14372:2004, analysis was performed by GC-MS.

Test Item(s):	Unit	MDL	002
Dibutyl Phthalate (DBP) Content	%(w/w)	0.003	ND
Benzylbutyl Phthalate (BBP) Content	%(w/w)	0.003	ND
Bis-(2-ethylhexyl) Phthalate (DEHP) Content	%(w/w)	0.003	ND
Diisononyl Phthalate (DINP) Content	%(w/w)	0.010	ND
Di-n-octyl Phthalate (DNOP) Content	%(w/w)	0.003	ND
Diisodecyl Phthalate (DIDP) Content	%(w/w)	0.010	ND
Dimethyl Phthalate (DMP) Content	%(w/w)	0.003	ND
Diethyl Phthalate (DEP) Content	%(w/w)	0.003	ND
Dipropyl Phthalate (DPrP) Content	%(w/w)	0.003	ND
Diisobutyl Phthalate (DIBP) Content	%(w/w)	0.003	ND
Dipentyl Phthalate (DPP) Content	%(w/w)	0.003	ND
Di-n-hexyl Phthalate (DnHP) Content	%(w/w)	0.003	ND
Dicyclohexyl Phthalate (DCHP) Content	%(w/w)	0.003	ND
Diphenyl Phthalate (DPhP) Content	%(w/w)	0.003	ND
Dibenzyl Phthalate (DBzP) Content	%(w/w)	0.003	ND
Dinonyl Phthalate (DNP) Content	%(w/w)	0.003	ND
Diisooctyl Phthalate (DIOP) Content	%(w/w)	0.010	ND

**Note:**

- (1) DBP, BBP, DEHP Reference information: Entry 51 of Regulation (EC) No 552/2009 amending Annex XVII of REACH Regulation (EC) No 1907/2006 (previously restricted under Directive 2005/84/EC):
  - i) Shall not be used as substances or in mixtures, in concentrations greater than 0.1 % by weight of the plasticised material, in toys and childcare articles.
  - ii) Toys and childcare articles containing these phthalates in a concentration greater than 0.1 % by weight of the plasticised material shall not be placed on the market.
 Please refer to Regulation (EC) No 552/2009 to get more detail information
- DINP, DNOP, DIDP Reference information: Entry 52 of Regulation (EC) No 552/2009 amending Annex XVII of REACH Regulation (EC) No 1907/2006 (previously restricted under Directive 2005/84/EC).
  - i) Shall not be used as substances or in mixtures, in concentrations greater than 0.1 % by weight of the plasticised material, in toys and childcare articles which can be placed in the mouth by children.
  - ii) Such toys and childcare articles containing these phthalates in a concentration greater than 0.1 % by weight of the plasticised material shall not be placed on the market.
 Please refer to Regulation (EC) No 552/2009 to get more detail information

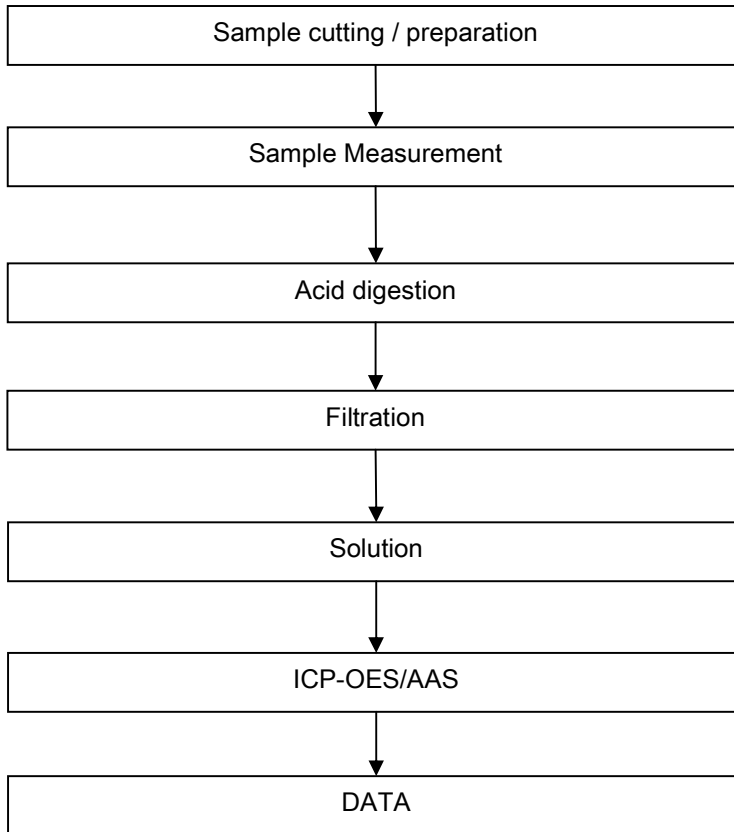
Remark : The result(s) shown is/are of the total weight of wet sample.

This document is issued by the Company subject to its General Conditions of Service printed overleaf, available on request or accessible at [http://www.sgs.com/terms\\_and\\_conditions.htm](http://www.sgs.com/terms_and_conditions.htm) and, for electronic format documents, subject to Terms and Conditions for Electronic Documents at [www.sgs.com/terms\\_e-document.htm](http://www.sgs.com/terms_e-document.htm). Attention is drawn to the limitation of liability, indemnification and jurisdiction issues defined therein. Any holder of this document is advised that information contained hereon reflects the Company's findings at the time of its intervention only and within the limits of Client's instructions, if any. The Company's sole responsibility is to its Client and this document does not exonerate parties to a transaction from exercising all their rights and obligations under the transaction documents. This document cannot be reproduced except in full, without prior written approval of the Company. Any unauthorized alteration, forgery or falsification of the content or appearance of this document is unlawful and offenders may be prosecuted to the fullest extent of the law. Unless otherwise stated the results shown in this test report refer only to the sample(s) tested.

ATTACHMENTS

CPSIA Pb Testing Flow Chart

- 1) Name of the person who made testing: Bella Wang
- 2) Name of the person in charge of testing: Adams Yu



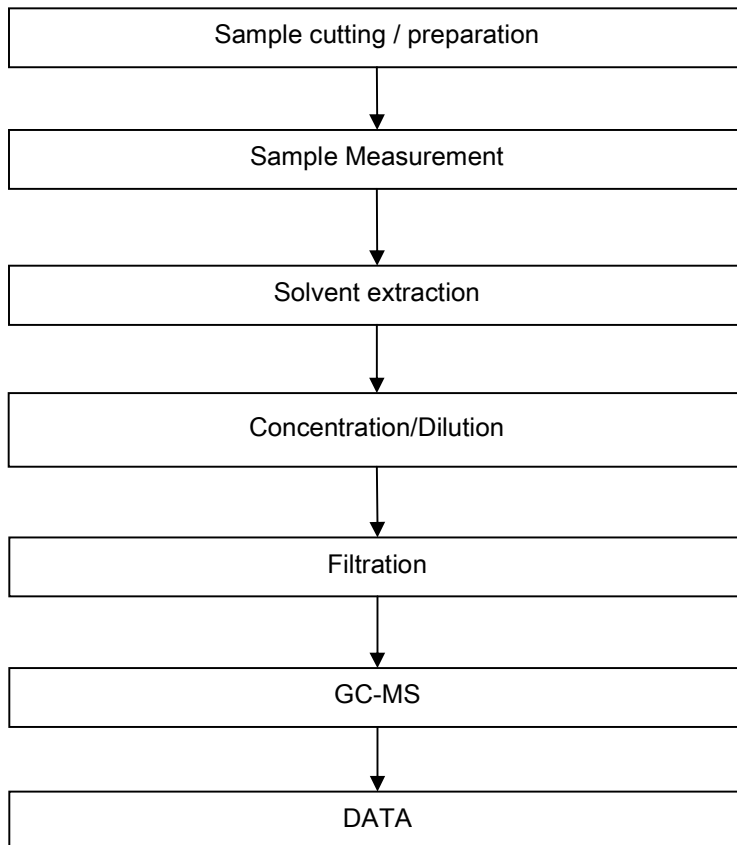
This document is issued by the Company subject to its General Conditions of Service printed overleaf, available on request or accessible at [http://www.sgs.com/terms\\_and\\_conditions.htm](http://www.sgs.com/terms_and_conditions.htm) and, for electronic format documents, subject to Terms and Conditions for Electronic Documents at [www.sgs.com/terms\\_e-document.htm](http://www.sgs.com/terms_e-document.htm). Attention is drawn to the limitation of liability, indemnification and jurisdiction issues defined therein. Any holder of this document is advised that information contained hereon reflects the Company's findings at the time of its intervention only and within the limits of Client's instructions, if any. The Company's sole responsibility is to its Client and this document does not exonerate parties to a transaction from exercising all their rights and obligations under the transaction documents. This document cannot be reproduced except in full, without prior written approval of the Company. Any unauthorized alteration, forgery or falsification of the content or appearance of this document is unlawful and offenders may be prosecuted to the fullest extent of the law. Unless otherwise stated the results shown in this test report refer only to the sample(s) tested.



ATTACHMENTS

Phthalates Testing Flow Chart

- 1) Name of the person who made testing: Tina Zhao
- 2) Name of the person in charge of testing: Ryan Yang



This document is issued by the Company subject to its General Conditions of Service printed overleaf, available on request or accessible at [http://www.sgs.com/terms\\_and\\_conditions.htm](http://www.sgs.com/terms_and_conditions.htm) and, for electronic format documents, subject to Terms and Conditions for Electronic Documents at [www.sgs.com/terms\\_e-document.htm](http://www.sgs.com/terms_e-document.htm). Attention is drawn to the limitation of liability, indemnification and jurisdiction issues defined therein. Any holder of this document is advised that information contained hereon reflects the Company's findings at the time of its intervention only and within the limits of Client's instructions, if any. The Company's sole responsibility is to its Client and this document does not exonerate parties to a transaction from exercising all their rights and obligations under the transaction documents. This document cannot be reproduced except in full, without prior written approval of the Company. Any unauthorized alteration, forgery or falsification of the content or appearance of this document is unlawful and offenders may be prosecuted to the fullest extent of the law. Unless otherwise stated the results shown in this test report refer only to the sample(s) tested.



Sample photo :



SGS authenticate the photo on original report only

\*\*\* End of Report \*\*\*

This document is issued by the Company subject to its General Conditions of Service printed overleaf, available on request or accessible at [http://www.sgs.com/terms\\_and\\_conditions.htm](http://www.sgs.com/terms_and_conditions.htm) and, for electronic format documents, subject to Terms and Conditions for Electronic Documents at [www.sgs.com/terms\\_e-document.htm](http://www.sgs.com/terms_e-document.htm). Attention is drawn to the limitation of liability, indemnification and jurisdiction issues defined therein. Any holder of this document is advised that information contained hereon reflects the Company's findings at the time of its intervention only and within the limits of Client's instructions, if any. The Company's sole responsibility is to its Client and this document does not exonerate parties to a transaction from exercising all their rights and obligations under the transaction documents. This document cannot be reproduced except in full, without prior written approval of the Company. Any unauthorized alteration, forgery or falsification of the content or appearance of this document is unlawful and offenders may be prosecuted to the fullest extent of the law. Unless otherwise stated the results shown in this test report refer only to the sample(s) tested.